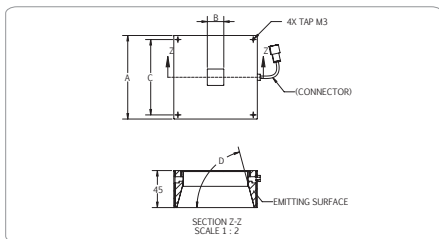
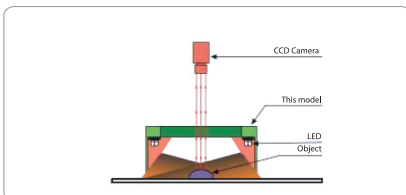
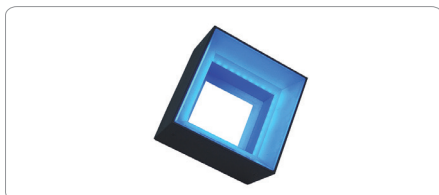


2017 Diffused Illumination

DLS2 & DLW2 SERIES - Diffused Square Illumination

DLS2 & DLW2 series provide diffused even illumination over a surface. The even illumination prevents glaring for reflective surface.

Application: character recognition on shining surface, lead inspection.



Technical Specification:

- Color Red, Green, Blue and White
- 24V DC Input Power
- Continuous and Strobe Applications
- Compact Size
- Lighting Cable 500mm

Customize Lighting:

- Customize Sizes, Mounting requirements
- Color and Voltage Available
- Consult Technical Sales for More Information

Model	Dimensions (MM)				Color	Voltage / Watt	Current	Weight (g)
	A	B	C	D°				
DLS2-60-050-1-X	50.8	16.0	40.0	60	● ● ● ●	24V / 2.88W	120mA	120
DLS2-60-070-1-X	76.2	20.0	66.0	60	● ● ● ●	24V / 1.92W	80mA	120
DLS2-60-100-1-X	101.6	20.0	91.5	60	● ● ● ●	24V / 2.88W	120mA	220
DLS2-60-100-1-X	101.6	20.0	91.5	60	● ● ● ●	24V / 4.32W	180mA	220
DLS2-60-100-1-X	101.6	20.0	91.5	60	● ● ● ●	24V / 4.32W	180mA	300
DLS2-60-100-1-X	101.6	20.0	91.5	60	● ● ● ●	24V / 4.80W	200mA	300
DLW2-60-070-1-X	76.2	40.0	66.0	60	● ● ● ●	24V / 2.88W	120mA	190
DLW2-60-070-1-X	76.2	40.0	66.0	60	● ● ● ●	24V / 4.32W	180mA	190
DLW2-60-100-1-X	101.6	66.0	91.5	60	● ● ● ●	24V / 4.32W	180mA	280
DLW2-60-100-1-X	101.6	66.0	91.5	60	● ● ● ●	24V / 4.80W	200mA	280

Optional Connector

Standard Lighting Male Connector

PIN 1	24V
PIN 2	-
PIN 3	GND

M8 Male Connector

M8 Pin Assignment

PIN 1	-	-
PIN 2	RED	24V
PIN 3	-	-
PIN 4	BLACK	GND

M12 Male Connector

M12 Pin Assignment

PIN 1	BROWN	24V
PIN 2	WHITE	-
PIN 3	BLUE	GND
PIN 4	BLACK	-
PIN 5	GRAY	-

Product Part Numbering System :
DLS2-60-050-1-X-24V-**M8**

Product Part Numbering System :
DSL2-60-050-1-X-24V-**M12**