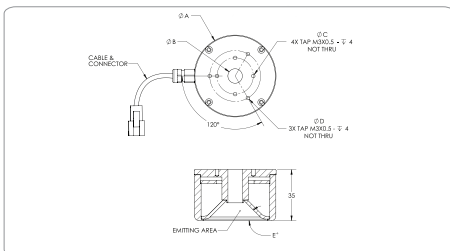
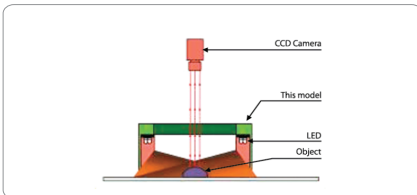


2017 Diffused Illumination

DLR3 SERIES – Diffused Angular Illumination

DLR3 series provide diffused even illumination over a surface. The even illumination prevents glaring for reflective surface.

Application: character recognition on shining surface, lead inspection.



Technical Specification:

- Color Red, Green, Blue and White
- 24V DC Input Power
- Continuous and Strobe Applications
- Compact Size
- Lighting Cable 500mm

Customize Lighting:

- Customize Sizes, Mounting requirements
- Color and Voltage Available
- Consult Technical Sales for More Information

LED Wavelength **[OSRAM LED Light Technology]**

- Red Led is 620nm
- Blue Led is 450nm
- Green Led is 540nm

Model	Dimensions [MM]					Color	Voltage / Watt	Current	Weight [g]
	ØA	ØB	ØC	ØD	E ^o				
DLR3-45-050-1-X	56.4	10	25	35	4.5	●●●	24V / 2.90W	120 mA	110
DLR3-45-080-1-X	81	30.5	54	56	4.5	●●●	24V / 4.30W	180 mA	145
DLR3-45-100-1-X	105.2	45.6	80	95	4.5	●●●	24V / 6.50W	270 mA	225
DLR3-45-130-1-X	131.5	74	95	106	4.5	●●●	24V / 8.60W	360 mA	280
DLR3-60-050-1-X	56.4	10	25	35	6.0	●●●	24V / 2.90W	120 mA	100
DLR3-60-080-1-X	81	36.2	54	56	6.0	●●●	24V / 4.30W	180 mA	145
DLR3-60-100-1-X	105.2	57	80	95	6.0	●●●	24V / 6.50W	270 mA	205
DLR3-60-130-1-X	131.5	84	95	106	6.0	●●●	24V / 8.60W	360 mA	285

Remarks: DLR2 part numbers are changed to DLR3

Optional Connector

Standard Lighting Male Connector

PIN 1	24V
PIN 2	-
PIN 3	GND

M8 Male Connector

M8 Pin Assignment

PIN 1	-	-
PIN 2	RED	24V
PIN 3	-	-
PIN 4	BLACK	GND

M12 Male Connector

M12 Pin Assignment

PIN 1	BROWN	24V
PIN 2	WHITE	-
PIN 3	BLUE	GND
PIN 4	BLACK	-
PIN 5	GRAY	-

Product Part Numbering System :
DLR3-45-050-1-X-24V-M8

Product Part Numbering System :
DLR3-45-050-1-X-24V-M12