

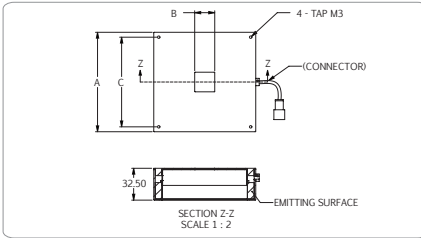
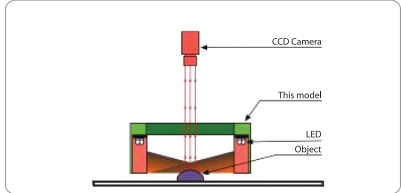
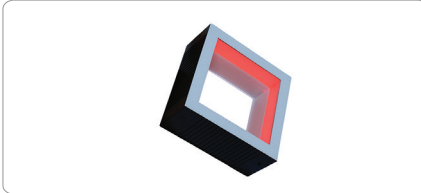
2017

Diffused Illumination

DLQ2 & DLF2 SERIES - Diffused Square Illumination

DLQ2 & DLF2 series provide diffused even illumination over from sides. The even illumination is suitable for inspection of rectangular work-piece.

Application: BGA ball inspection and QFP lead inspection.



Technical Specification:

- Color Red, Green, Blue and White
- 24V DC Input Power
- Continuous and Strobe Applications
- Compact Size
- Lighting Cable 500mm

Customize Lighting:

- Customize Sizes, Mounting requirements
- Color and Voltage Available
- Consult: Technical Sales for More Information

Model	Dimensions (MM)			Color	Voltage / Watt	Current	Weight (g)
	A	B	C				
DLQ2-90-030-1-X	31.8	10.0	21.0	● ● ● ○	24V / 1.44W	60mA	50
DLQ2-90-050-1-X	50.8	10.0	40.0	● ● ● ○	24V / 1.44W	60mA	100
DLQ2-90-070-1-X	76.2	20.0	66.0	● ● ● ○	24V / 2.88W	120mA	150
DLQ2-90-100-1-X	101.6	20.0	91.5	● ● ● ○	24V / 1.92W	80mA	220
DLQ2-90-100-1-X	101.6	20.0	91.5	● ● ● ○	24V / 2.88W	120mA	150
DLQ2-90-100-1-X	101.6	20.0	91.5	● ● ● ○	24V / 4.32W	180mA	220
DLQ2-90-100-1-X	101.6	20.0	91.5	● ● ● ○	24V / 4.80W	200mA	220
DLF2-90-050-1-X	50.8	26.0	40.0	● ● ● ○	24V / 2.88W	120mA	90
DLF2-90-050-1-X	50.8	26.0	40.0	● ● ● ○	24V / 1.92W	80mA	90
DLF2-90-070-1-X	76.2	55.0	66.0	● ● ● ○	24V / 2.88W	120mA	160
DLF2-90-070-1-X	76.2	55.0	66.0	● ● ● ○	24V / 4.32W	180mA	160
DLF2-90-100-1-X	101.6	80.0	91.5	● ● ● ○	24V / 4.32W	180mA	220
DLF2-90-100-1-X	101.6	80.0	91.5	● ● ● ○	24V / 4.80W	200mA	220

Optional Connector

Standard Lighting Male Connector

PIN 1	24V
PIN 2	-
PIN 3	GND

M8 Male Connector

M8 Pin Assignment

PIN 1	-	-
PIN 2	RED	24V
PIN 3	-	-
PIN 4	BLACK	GND

M12 Male Connector

M12 Pin Assignment

PIN 1	BROWN	24V
PIN 2	WHITE	-
PIN 3	BLUE	GND
PIN 4	BLACK	-
PIN 5	GRAY	-

Product Part Numbering System :
DLQ2-90-030-1-X-24V-M8

Product Part Numbering System :
DLQ2-90-030-1-X-24V-M12