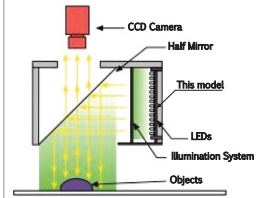
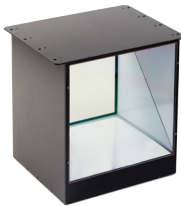


2017 Coaxial Illumination

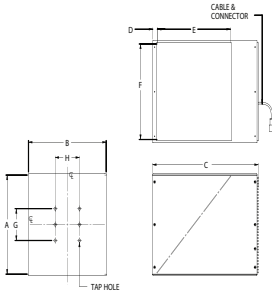
CAS3 SERIES – Even Co-axial Light

CAS3 series provide co-axial illumination for tele-centric lenses. The lights are reflected by 45 degrees half mirror to provide light in line with the camera.

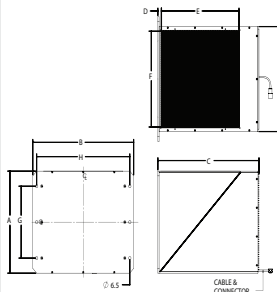
Application: surface inspection and alignment, water, metal surface film, LCD and glass, pattern on PCB.



CAS3-00-150



CAS3-00-200/250



Technical Specification:

- Color Red, Green, Blue and White
- 24V DC Input Power
- Continuous and Strobe Applications
- Compact Size
- Lighting Cable 500mm

Customize Lighting:

- Customize Sizes, Mounting requirements
- Color and Voltage Available
- Consult Technical Sales for More Information

LED wavelength [OSRAM LED Light Technology]

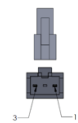
- Red Led is 620nm
- Blue Led is 450nm
- Green Led is 540nm

Model	Dimensions (MM)									TAP HOLE	Color	Voltage / Watt	Current	Weight (g)
	A	B	C	D	E	F	G	H	I					
CAS3-00-150-X-X	155.6	160	217.5	10	150	150	50	50	-	M6	● 24V / 25.34 W	1056 mA	2000	
CAS3-00-200-X-X	213	260	260.5	9	200	200	150	240	219	-	● 24V / 19.44 W	810 mA	3200	
CAS3-00-250-X-X	260.6	310	309.5	9	250	250	210	290	269	-	● 24V / 32.40 W	1350 mA	3200	
											● 24V / 38.02 W	1584 mA	5000	
											● 24V / 46.66 W	1944 mA	5000	
											● 24V / 54.00 W	2250 mA	5000	

Remarks: CAS2 part numbers are changed to CAS3

Optional Connector

Standard Lighting Male Connector



PIN 1	24V
PIN 2	-
PIN 3	GND

M8 Male Connector



M8 Pin Assignment

PIN 1	-	-
PIN 2	RED	24V
PIN 3	-	-
PIN 4	BLACK	GND

M12 Male Connector



M12 Pin Assignment

PIN 1	BROWN	24V
PIN 2	WHITE	-
PIN 3	BLUE	GND
PIN 4	BLACK	-
PIN 5	GRAY	-

Product Part Numbering System :
CAS3-00-150-X-X-24V-M8

Product Part Numbering System :
CAS3-00-150-X-X-24V-M12