

Stainless Steel High Capacity Compression **LOAD CELL**

CTUS Series



- Capacities 5,000 to 50,000kg
- Sealed to IP68
- Robust Stainless Steel Construction
- Low Profile/High Accuracy
- Sense wire facility
- OIML R60 approved, to 6000 divisions
- Hazardous area approved to EEx ia IIC T6
- 3 YEAR WARRANTY

Options Available

Other Ranges Available on request

Different Cable Lengths

Full range of mounting options available, including

- Vessel/Silo Mounting Assembly
- Weighbridge Mounting Assembly
- Load Buttons
- Special Mounting Assemblies (on request)

500VAC Certification

BASEEFA Certification

DESCRIPTION

The CTUS is a low profile bending/torsion ring load cell designed for high capacity weighing systems, such as silos and weighbridges. It is also ideally suited for force measurement applications where high accuracy is required and the force to be measured is high and in a confined space, such as in press calibration.

The low profile of the CTUS and its low cost compared to competitive load cells of similar capacities has made it the first choice for many Process Engineers.

The load cell can be supplied with various mounting options, and can be combined with any of our Instrumentation range to complete any system requirements.

Sense wires fitted to the CTUS to offer even greater accuracy when used with electronics with sensing supplies, by compensating for changes in lead resistance due to temperature change and/or cable extension.

Transducer Specialists...

APPLIED MEASUREMENTS LIMITED

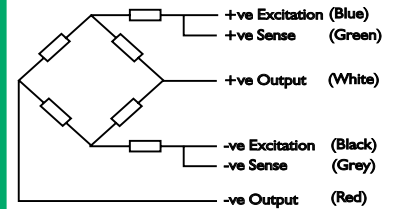
3 MERCURY HOUSE - CALLEVA PARK - ALDERMASTON - BERKSHIRE - RG7 8PN - UK

Tel: (+44) 0118 981 7339 Fax: (+44) 0118 981 9121 email: info@appmeas.co.uk Internet: www.appmeas.co.uk



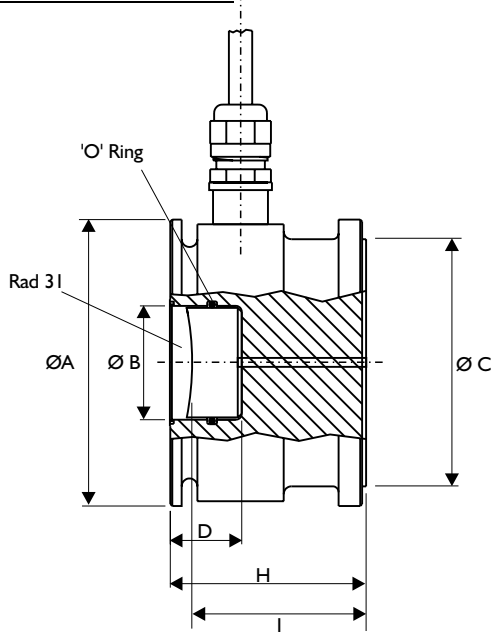
SPECIFICATION

Wiring Schematic Diagram

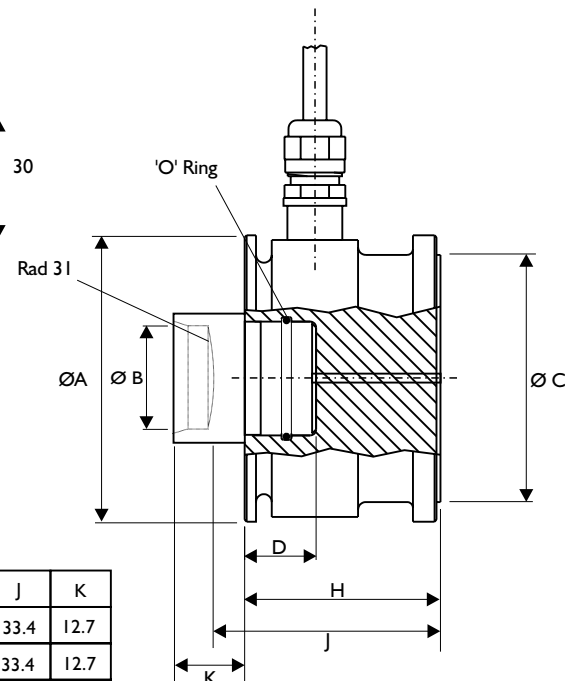
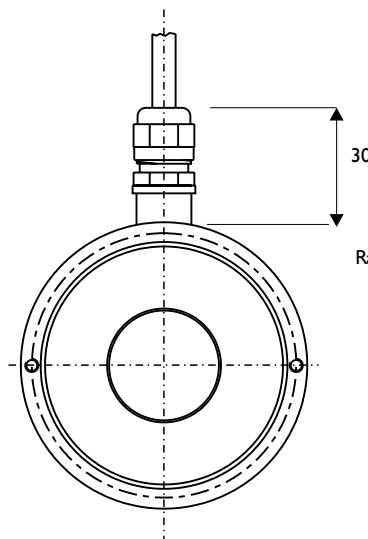


CHARACTERISTICS	CTUS	UNITS
Rated Capacities:	5,000, 10,000, 20,000, 30,000, 50,000	kg
Rated Output:	2.0 ±0.1%	mV/V
Total Error:	<0.02	±% of Rated Output
Zero Return after 30 mins:	<0.017	±% of Applied Load
Zero Balance:	<2.0	±% of Rated Output
Temperature Range: Operating	-30 to +70	°C
Compensated	-10 to +40	°C
Temperature Effect: On Output	<0.001	% of Applied Load/ °C
On Zero	<0.001	% of Applied Load/ °C
Safe Overload:	150	% of Rated Capacity
Ultimate Overload:	300	% of Rated Capacity
Excitation: Recommended	10	Volts AC or DC
Maximum	15	Volts AC or DC
Input Impedance:	1065 ± 50	Ohms
Output Impedance:	1000 nominal	Ohms
Insulation Impedance:	>2000	Megaohms
Deflection at Rated Capacity:	<0.5	mm
Weight: (including cable)	1.1 (5T), 1.5 (10T), 3.25 (20 & 30T), 4.3 (50T)	kg
Construction:	Stainless Steel	
Environmental Protection:	IP68	
Cable:	6 Wire Polyurethane, Double Screened 5000kg 5 metres long 10,000kg 10 metres long 20, 30 & 50,000kg 20 metres long	

All dimensions in mm



20-50 Tonne Capacity



5 & 10 Tonne Capacity

	Ø A	Ø B	Ø C	D	H	J	K
5T	80.0	19	70	20	30	33.4	12.7
10T	92.0	28	80	14.6	33	33.4	12.7
20T	110	29	101.5	26.3	50	39	N/A
30T	110	29	101.5	26.3	50	39	N/A
50T	125	42	114.5	28.4	57.65	39	N/A

APPLIED MEASUREMENTS LIMITED

Issue 10/05



Continuous product development may result in minor changes to published specifications.